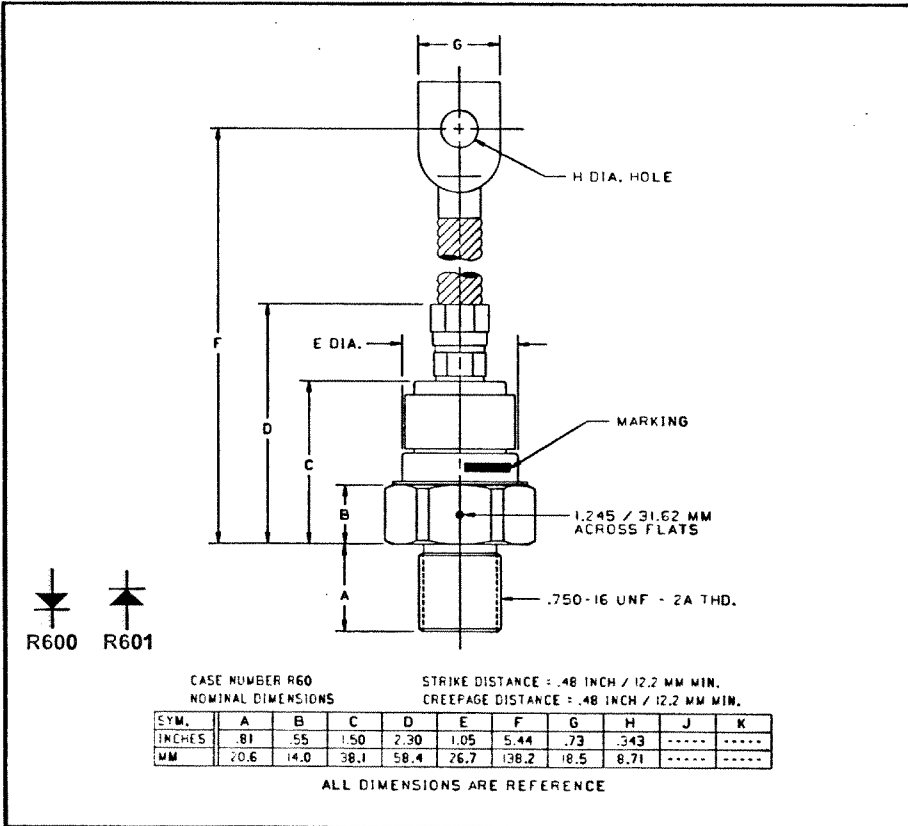
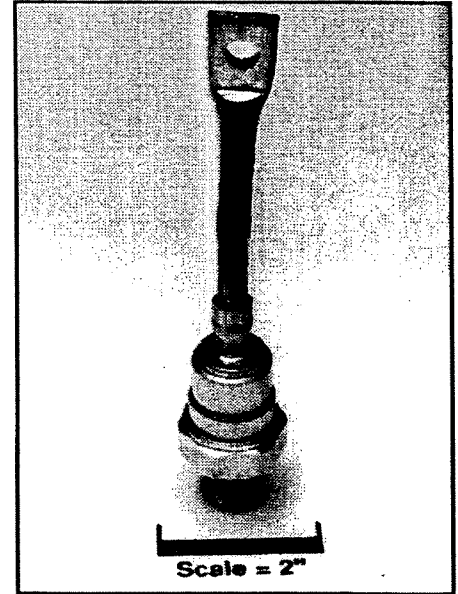


Powerex, Inc., 200 Hills Street, Youngwood, Pennsylvania 15697-1800 (412) 925-7272  
 Powerex, Europe, S.A. 428 Avenue G. Durand, BP107, 72003 Le Mans, France (43) 41.14.14

**General Purpose Rectifier**  
 200-300 Amperes Average  
 1400-2600 Volts



R600/R601 (Outline Drawing)



R600/R601  
 General Purpose Rectifier  
 200-300 Amperes Average,  
 1400-2600 Volts

### Ordering Information:

Select the complete part number you desire from the following table:

Type	Voltage		Current		Recovery Time		Recovery Time Circuit		Leads	
	V <sub>RRM</sub> (Volts)	Code	I <sub>F(av)</sub> (A)	Code	t <sub>rr</sub> (µsec)	Code	Circuit	Code	Case	Code
R600 (Std. Polarity)	1400	14	200	20	13	X	JEDEC	X	DO-9	YA
	1600	16								
	1800	18	250	25	11	X				
	2000	20								
R601 (Rev. Polarity)	2200	22	300	30	9	X				
	2400	24								
	2600	26								

Example: Type R600 Rated at 300A average with VRRM = 2600V and standard flexible lead, order as:

Type	Voltage	Current	Time	Circuit	Leads
R 6 0 0	2 6	3 0	X	X	Y A

### Features:

- Standard and Reverse Polarities
- Flag Lead and Stud Top Terminals Available
- High Surge Current Ratings
- High Rated Blocking Voltages
- Special Electrical Selection for Parallel and Series Operation
- Glazed Ceramic Seal Gives High Voltage Creepage and Strike Paths
- Compression Bonded Encapsulation
- JAN Types Available

### Applications:

- Welders
- Battery Chargers
- Electromechanical Refining
- Metal Reduction
- General Industrial High Current Rectification



Powerex, Inc., 200 Hillis Street, Youngwood, Pennsylvania 15697-1800 (412) 925-7272  
Powerex, Europe, S.A. 428 Avenue G. Durand, BP107, 72003 Le Mans, France (43) 41.14.14

**R600/R601**

**General Purpose Rectifier**

200-300 Amperes Average, 1400-2600 Volts

**Absolute Maximum Ratings**

Characteristics	Symbol	R600_20,	R600_25,	R600_30,	Units
		R601_20	R601_25	R601_30	
RMS Forward Current	$I_{F(rms)}$	315	400	470	Amperes
Average Forward Current	$I_{F(av)}$	200	250	300	Amperes
One-half Cycle Surge Current	$I_{FSM}$	5500	6000	6500	Amperes
3 Cycle Surge Current	$I_{FSM}$	4300	4700	5050	Amperes
10 Cycle Surge Current	$I_{FSM}$	3300	3600	3900	Amperes
$I^2t$ (for Fusing), Times = 8.3 milliseconds	$I^2t$	125000	150000	175000	$A^2sec$
Storage Temperature	$T_{stg}$	-65 to +190	-65 to +190	-65 to +190	$^{\circ}C$
Operating Temperature	$T_j$	Up to 1200V	1200V to 2200V	2200V to 2800V	$^{\circ}C$
		-65 to +190	-65 to +175	-65 to +150	
Mounting Torque		360	360	360	in-lb

Powerex, Inc., 200 Hillis Street, Youngwood, Pennsylvania 15697-1800 (412) 925-7272  
 Powerex, Europe, S.A. 428 Avenue G. Durand, BP107, 72003 Le Mans, France (43) 41.14.14

**R600/R601**

**General Purpose Rectifier**

200-300 Amperes Average, 1400-2600 Volts

**Electrical and Thermal Characteristics**

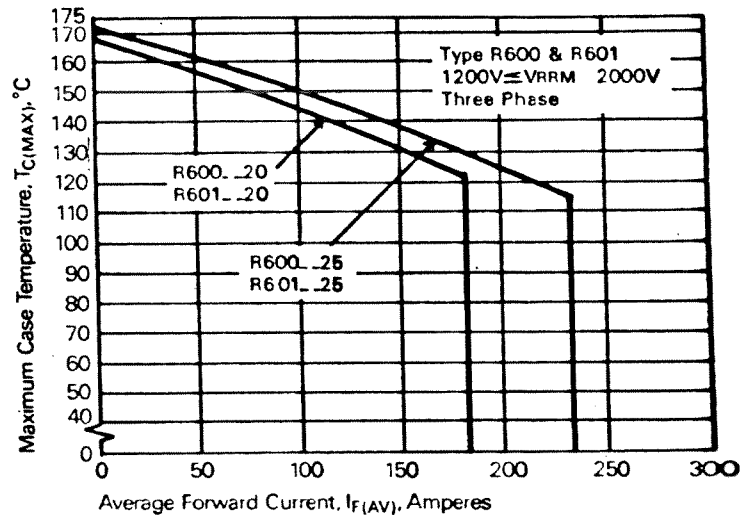
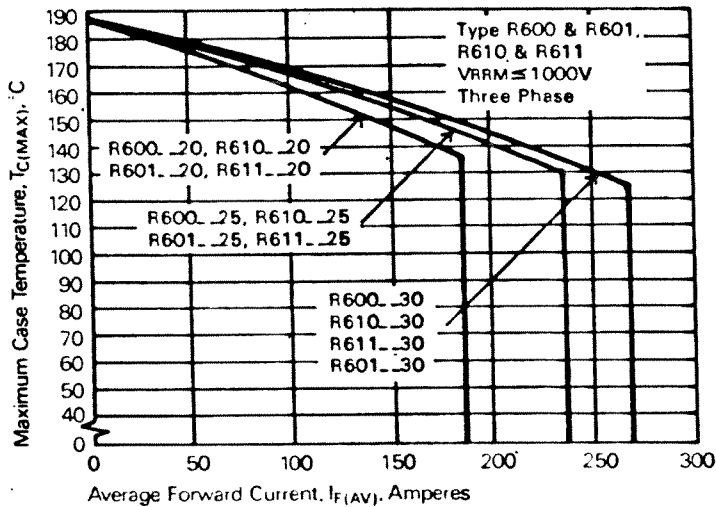
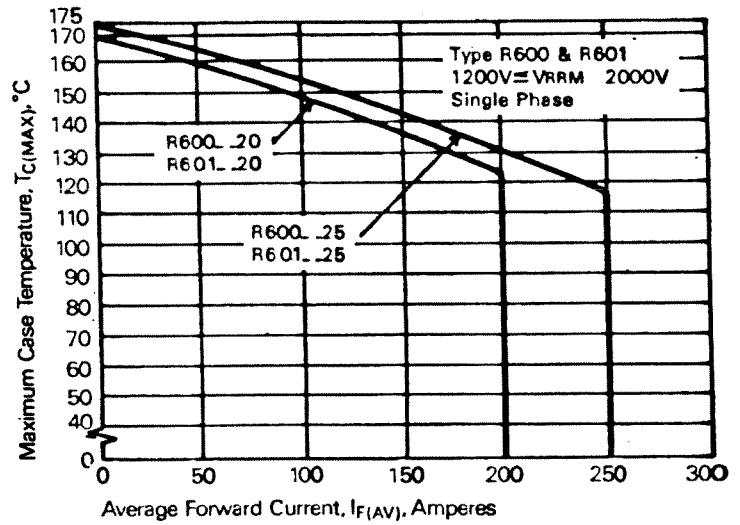
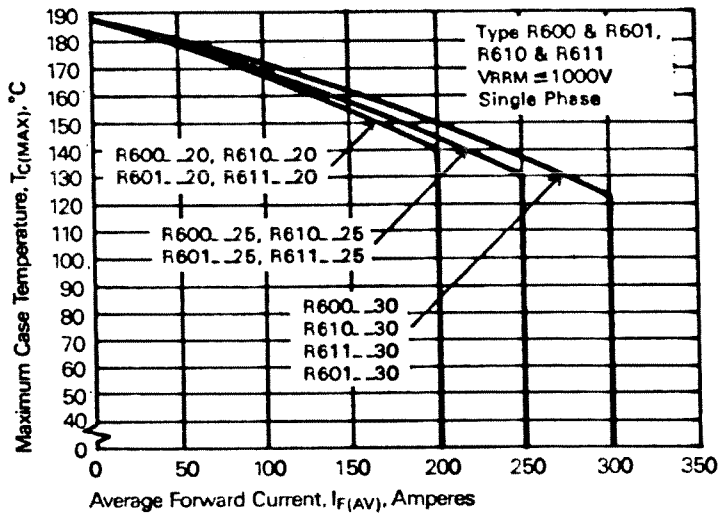
Characteristics	Symbol	Test Conditions	R600_20,	R600_25,	R600_30,	Units
			R601_20	R601_25	R601_30	
<b>Current - Conducting State Maximums</b>						
Forward Voltage Drop	$V_{FM}$	$T_j = 25^\circ\text{C}, I_{FM} = 800\text{A}$	1.70	1.50	1.40	Volts
<b>Voltage - Blocking State Maximums</b>						
Repetitive Peak Reverse Voltage (Rated Limit)	$V_{RRM}$		2600	2600	2600	Volts
Non-rep. Trans. Peak Rev. Voltage (Rated Limit)	$V_{RSM}$	$V \leq 5.0\text{msec}$	2800	2800	2800	$\mu\text{sec}$
Reverse Leakage Current	$I_{RRM}$	$T_j$ at max., $V_{RRM}$ Rated	50	50	50	mA
<b>Switching</b>						
Typical Reverse Recovery Time	$t_{rr}$	$I_{FM} = 785\text{A}, t_p = 100\mu\text{sec},$ $di_R/dt = 25\text{A}/\mu\text{sec}, T_C = 25^\circ\text{C}$	9	11	13	$\mu\text{sec}$
<b>Thermal</b>						
Maximum Resistance, Case to Sink (Lubricated)	$R_{\theta(c-s)}$		0.10	0.10	0.10	$^\circ\text{C}/\text{Watt}$

Powerex, Inc., 200 Hillis Street, Youngwood, Pennsylvania 15697-1800 (412) 925-7272  
 Powerex, Europe, S.A. 428 Avenue G. Durand, BP107, 72003 Le Mans, France (43) 41.14.14

## R600/R601

### General Purpose Rectifier

200-300 Amperes Average, 1400-2600 Volts

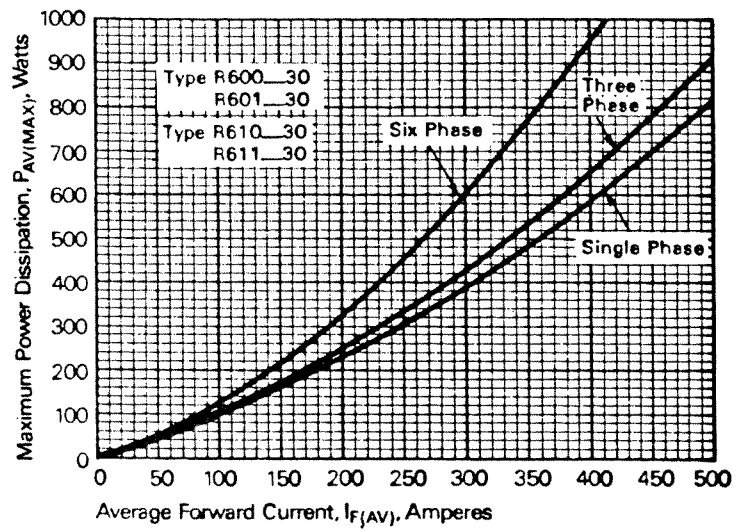
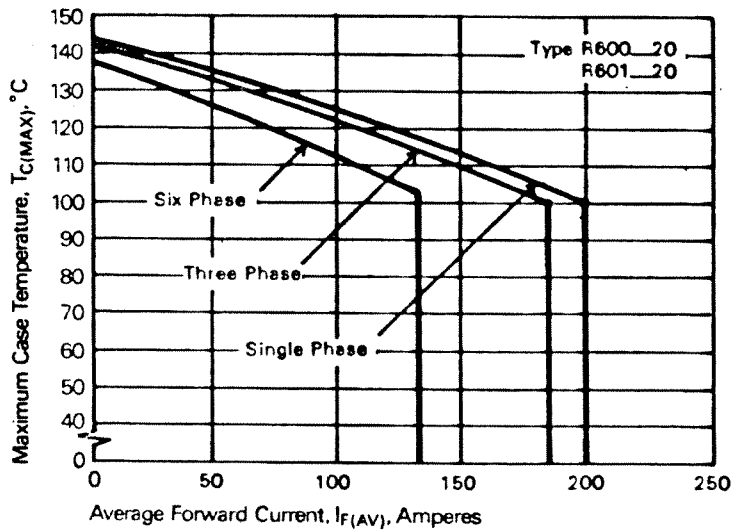
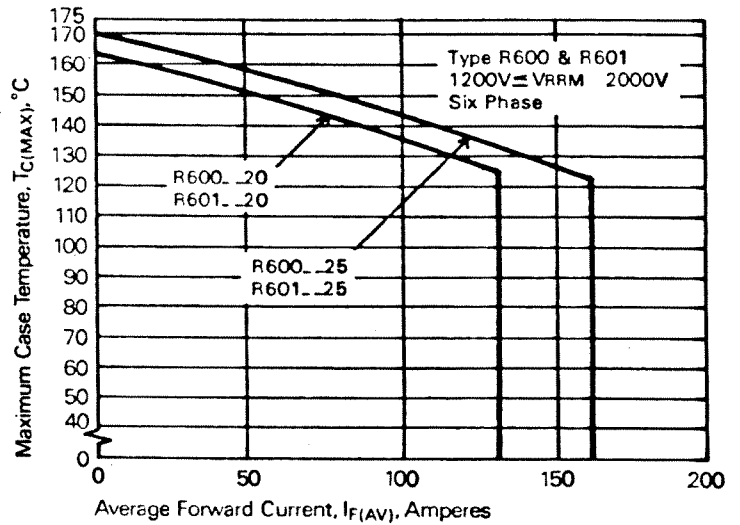
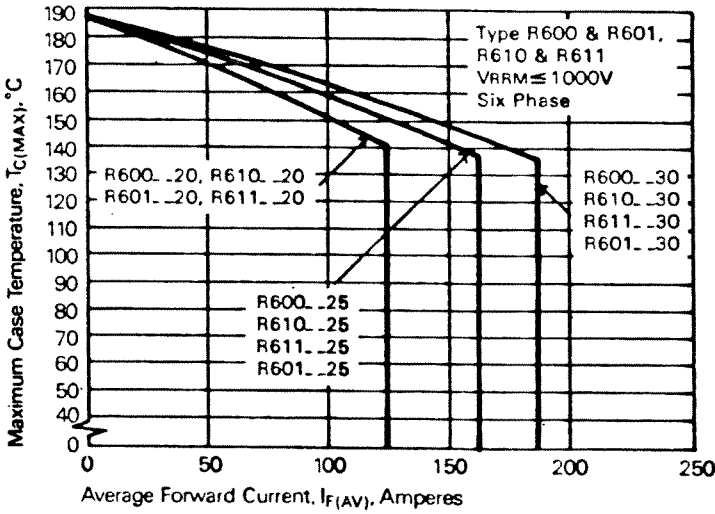


Powerex, Inc., Hillis Street, Youngwood, Pennsylvania 15697 (412) 925-7272  
 Powerex, Europe, S.A. 428 Avenue G. Durand, BP107, 72003 Le Mans, France (43) 41.14.14

## R600/R601

### General Purpose Rectifier

200-300 Amperes Average, 1400-2600 Volts



Powerex, Inc., Hillis Street, Youngwood, Pennsylvania 15697 (412) 925-7272  
 Powerex, Europe, S.A. 428 Avenue G. Durand, BP107, 72003 Le Mans, France (43) 41.14.14

**R600/R601**  
**General Purpose Rectifier**  
 200-300 Amperes Average, 1400-2600 Volts

