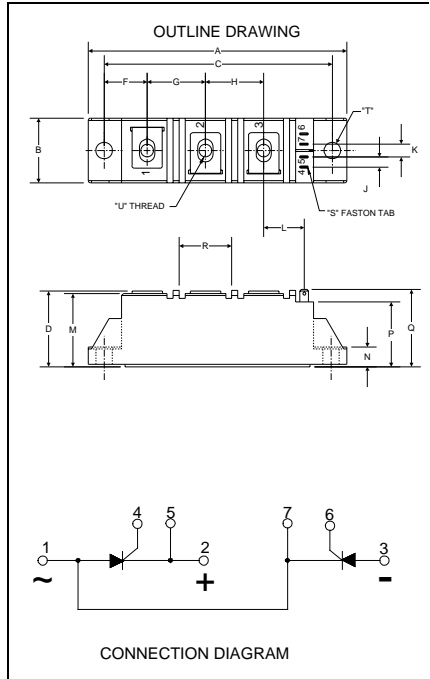


Powerex, Inc., Hillis Street, Youngwood, Pennsylvania 15697 (724)925-7272

POW-R-BLOK™ Dual SCR Isolated Module 90 Amperes / Up to 1600 Volts



CD43_90
Dual SCR Isolated
POW-R-BLOK™ Module
90 Amperes / Up to 1600 Volts

Description:

Powerex Dual SCR Modules are designed for use in applications requiring phase control and isolated packaging. The modules are isolated for easy mounting with other components on a common heatsink. POW-R-BLOK™ has been tested and recognized by the Underwriters Laboratories.

Features:

- Electrically Isolated Heatsinking
- DBC Alumina (Al₂O₃) Insulator
- Glass Passivated Chips
- DBC Alumina (Al₂O₃) Baseplate
- Low Thermal Impedance for Improved Current Capability
- Quick Connect Gate Terminal with Provision for Keyed Mating Plug
- UL Recognized (E78240)

Benefits:

- No Additional Insulation Components Required
- Easy Installation
- No Clamping Components Required
- Reduce Engineering Time

Applications:

- Bridge Circuits
- AC & DC Motor Drives
- Battery Supplies
- Power Supplies
- Large IGBT Circuit Front Ends
- Lighting Control
- Heat & Temperature Control
- Welders

CD43 Outline Dimensions

Dimension	Inches	Millimeters
A	3.62	92
B	0.81	20.5
C	3.15	80
D	1.18	30
F	0.59	15
G	0.79	20
H	0.79	20
J	0.16	4
K	0.23	5.8
L	0.61	15.5
M	1.14	29
N	0.24	6.1
P	0.94	24
Q	1.18	30
R	0.71	18
S	0.11 x .03	2.8 x 0.8
T	0.25	6.3
U	M5	M5

Note: Dimensions are for reference only.

Ordering Information:

Example: Select the complete eight digit module part number from the table below.

Example: CD431690 is a 1600Volt, 90 Ampere Dual SCR Isolated POW-R-BLOK™ Module

Type	Voltage Volts (x100)	Current Amperes (x 1)
CD43	08	90
	12	
	14	
	16	

Absolute Maximum Ratings

Characteristics	Conditions	Symbol	Units
Repetitive Peak Forward and Reverse Blocking Voltage		V_{DRM} & V_{RRM}	up to 1600 V
Non-Repetitive Peak Reverse Blocking Voltage (t < 5 msec)		V_{RSM}	$V_{RRM} + 100$ V
RMS Forward Current	180° Conduction, $T_C=87^\circ\text{C}$	$I_{T(RMS)}$	140 A
	180° Conduction, $T_C=87^\circ\text{C}$ (AC Switch)	$I_{T(RMS)}$	200 A
Average Forward Current	180° Conduction, $T_C=87^\circ\text{C}$	$I_{T(AV)}$	90 A
Peak One Cycle Surge Current, Non-Repetitive	60 Hz, 100% V_{RRM} reapplied, $T_j=125^\circ\text{C}$	I_{TSM}	1570 A
	60 Hz, No V_{RRM} reapplied, $T_j=125^\circ\text{C}$	I_{TSM}	1870 A
	60 Hz, No V_{RRM} reapplied, $T_j=25^\circ\text{C}$	I_{TSM}	2100 A
	50 Hz, 100% V_{RRM} reapplied, $T_j=125^\circ\text{C}$	I_{TSM}	1500 A
	50 Hz, No V_{RRM} reapplied, $T_j=125^\circ\text{C}$	I_{TSM}	1785 A
	50 Hz, No V_{RRM} reapplied, $T_j=25^\circ\text{C}$	I_{TSM}	2000 A
Peak Three Cycle Surge Current, Non-Repetitive	60 Hz, 100% V_{RRM} reapplied, $T_j=125^\circ\text{C}$	I_{TSM}	1210 A
	50 Hz, 100% V_{RRM} reapplied, $T_j=125^\circ\text{C}$	I_{TSM}	1155 A
Peak Ten Cycle Surge Current, Non-Repetitive	60 Hz, 100% V_{RRM} reapplied, $T_j=125^\circ\text{C}$	I_{TSM}	960 A
	50 Hz, 100% V_{RRM} reapplied, $T_j=125^\circ\text{C}$	I_{TSM}	940 A
I^2t for Fusing for One Cycle, 8.3 milliseconds	8.3 ms, 100% V_{RRM} reapplied, $T_j=125^\circ\text{C}$	I^2t	10,270 A^2sec
	8.3 ms, No V_{RRM} reapplied, $T_j=125^\circ\text{C}$	I^2t	14,520 A^2sec
	8.3 ms, No V_{RRM} reapplied, $T_j=25^\circ\text{C}$	I^2t	18,300 A^2sec
	10 ms, 100% V_{RRM} reapplied, $T_j=125^\circ\text{C}$	I^2t	11,250 A^2sec
	10 ms, No V_{RRM} reapplied, $T_j=125^\circ\text{C}$	I^2t	15,910 A^2sec
	10 ms, No V_{RRM} reapplied, $T_j=25^\circ\text{C}$	I^2t	20,000 A^2sec
Maximum Rate-of-Rise of On-State Current, (Non-Repetitive)	$T_j=25^\circ\text{C}$, $I_G=0.5\text{ A}$, $V_D=0.67 V_{DRM}$ (Rated), $I_{TM}=300\text{ A}$, $T_r < 0.5\ \mu\text{s}$, $t_p > 6\ \mu\text{s}$	di/dt	150 $\text{A}/\mu\text{s}$
Peak Gate Power Dissipation	$T_p < 5\text{ ms}$, $T_j = 125^\circ\text{C}$	P_{GM}	12 W
Average Gate Power Dissipation	$F = 50\text{ Hz}$, $T_j = 125^\circ\text{C}$	$P_{G(AV)}$	3 W
Peak Forward Gate Current	$T_p < 5\text{ ms}$, $T_j = 125^\circ\text{C}$	I_{GFM}	3 A
Peak Reverse Gate Voltage	$T_p < 5\text{ ms}$, $T_j = 125^\circ\text{C}$	V_{GRM}	10 V
Operating Temperature		T_j	-40 to +125 $^\circ\text{C}$
Storage Temperature		T_{stg}	-40 to +125 $^\circ\text{C}$
Max. Mounting Torque, M5 Mounting Screw on Terminals			25 in.-Lb.
			3 Nm
Max. Mounting Torque, Module to Heatsink			44 in.-Lb.
			5 Nm
Module Weight, Typical			83 g
			3 oz.
V Isolation @ 25C	50 – 60 Hz, 1 minute	V_{rms}	2500 V
Circuit to base, all terminals shorted together	50 – 60 Hz, 1 second	V_{rms}	3500 V

Electrical Characteristics, T_J=25°C unless otherwise specified

Characteristics	Symbol	Test Conditions	Min.	Max.	Units
Repetitive Peak Forward Leakage Current	I _{DRM}	Up to 1600V, T _J =125°C		15	mA
Repetitive Peak Reverse Leakage Current	I _{RDM}	Up to 1600V, T _J =125°C		15	mA
Peak On-State Voltage	V _{FM}	I _{TM} =300A		1.58	V
Threshold Voltage, Low-level	V _{(TO)1}	T _J = 125°C, I = 16.7% x I _{T(AV)} to I _{T(AV)}		0.80	V
Slope Resistance, Low-level	r _{T1}			2.40	mΩ
Threshold Voltage, High-level	V _{(TO)2}	T _J = 125°C, I = I _{T(AV)} to I _{TSM}		0.85	V
Slope Resistance, High-level	r _{T2}			2.25	mΩ
V _{TM} Coefficients, Full Range		T _J = 125°C, I = 15% x I _{T(AV)} to I _{TSM} V _{TM} = A+ B Ln I +C I + D Sqrt I	A = B = C = D =	0.7160 2.17E-02 2.20E-03 1.58E-03	
Minimum dV/dt	dV/dt	Linear to 2/3 V _{DRM} T _J =125°C, Gate Open Circuit	500		V/μs
Turn-Off Time (Typical)	t _{off}	T _J = 25°C, I _T = 2A V _r = 50V, -di/dt=10 A/μs Re-Applied dV/dt = 200V/μs, Linear to 900 V	40 - 100	(Typical)	μs
Gate Trigger Current	I _{GT}	T _J = -40°C, V _D =6V, Resistive Load T _J = 25°C, V _D =6V, Resistive Load T _J =125°C, V _D =6V, Resistive Load		270 150 80	mA mA mA
Gate Trigger Voltage	V _{GT}	T _J = -40°C, V _D =6V, Resistive Load T _J = 25°C, V _D =6V, Resistive Load T _J =125°C, V _D =6V, Resistive Load		4.0 2.5 1.7	Volts Volts Volts
Non-Trigging Gate Voltage	V _{GDM}	T _J =125°C, V _D =V _{DRM}		0.25	Volts
Non-Trigging Gate Current	I _{GDM}	T _J =125°C, V _D =V _{DRM}		6	mA
Holding Current	I _H	V _D =6V, Resistive Load, Gate Open		200	mA
Latching Current	I _L	V _D =6V, Resistive Load		400	mA

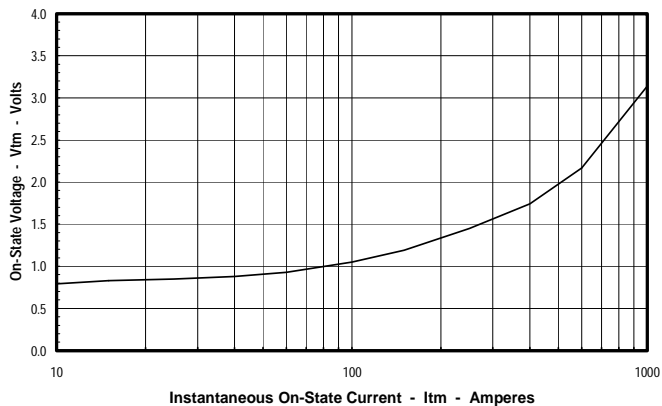
Thermal Characteristics

Characteristics	Symbol		Max.	Units
Thermal Resistance, Junction to Case DC Operation	R _{ΘJ-C}	Per Module, both conducting Per Junction, both conducting	0.135 0.270	°C/W °C/W
Thermal Impedance Coefficients	Z _{ΘJ-C}	Z _{ΘJ-C} = K ₁ (1-exp(-t/τ ₁)) + K ₂ (1-exp(-t/τ ₂)) + K ₃ (1-exp(-t/τ ₃)) + K ₄ (1-exp(-t/τ ₄))	K ₁ = 6.48 E-3 K ₂ = 6.02 E-2 K ₃ = 1.64 E-1 K ₄ = 3.94 E-2	τ ₁ = 5.80 E-4 τ ₂ = 1.70 E-2 τ ₃ = 9.54 E-2 τ ₄ = 3.53 E-1
Thermal Resistance, Case to Sink Lubricated	R _{ΘC-S}	Per Module	0.1	°C/W

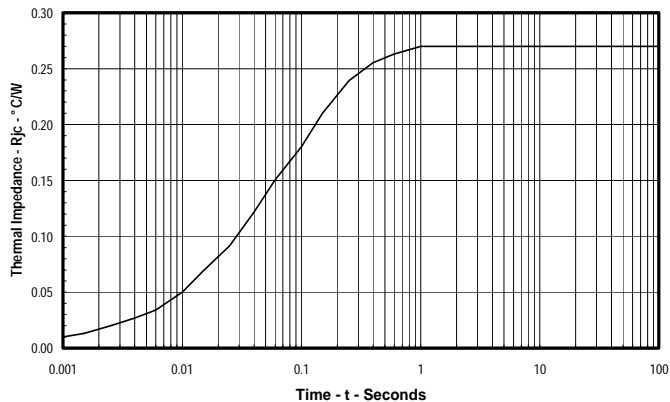
Powerex, Inc., Hillis Street, Youngwood, Pennsylvania 15697 (724)925-7272

Dual SCR Module 90 Amperes / Up to 1600 Volts

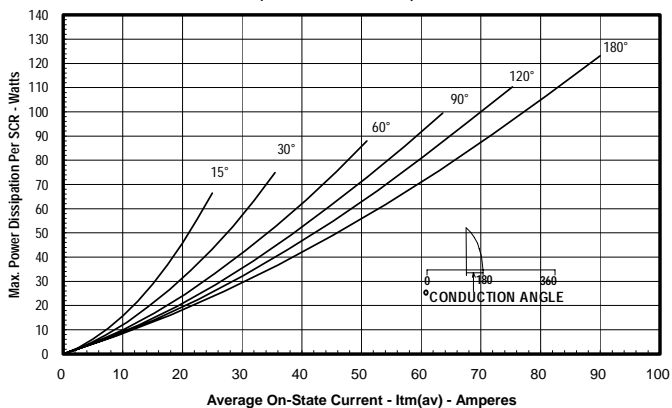
Maximum On-State Forward Voltage Drop
($T_j = 125^\circ\text{C}$)



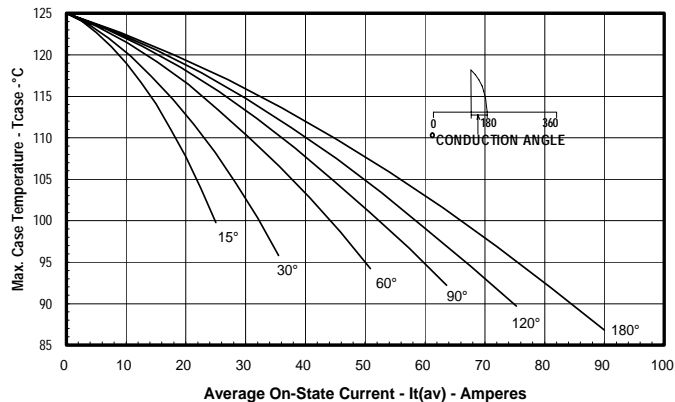
Maximum Transient Thermal Impedance
(Junction to Case)



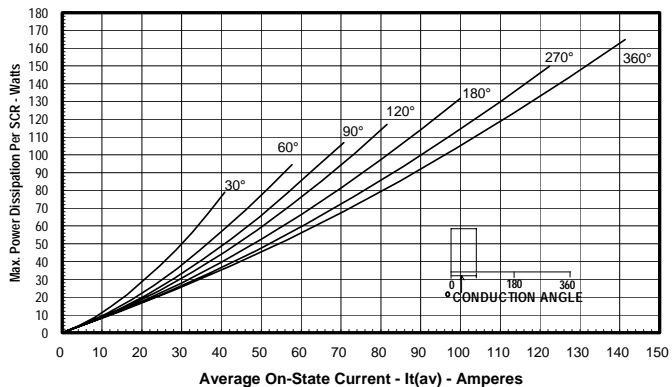
Maximum On-State Power Dissipation
(Sinusoidal Waveform)



Maximum Allowable Case Temperature
(Sinusoidal Waveform)



Maximum On-State Power Dissipation
(Rectangular Waveform)



Maximum Allowable Case Temperature
(Rectangular Waveform)

